

STRIPE 1402

Replace cross frames

West Beam Limits of Heat Straightening:
14' from face of Pier 1 (South Pier) to 28'
from face of Pier 1 (South Pier)

CL US 30 EB

End Crossframes
3 1/2-4 x 4 x 5/16

Abutment Brgs.
E-100

Top Moment R 10x7/16 x 15'-6"
Btm. Moment R 13x1/2 x 15'-6"

Pier 1 (Pier 3)
R-150

Bolted Field Splices

Top Moment R 10x1/2 x 15'-4"
Btm. Moment R 13x1/2 x 15'-4"

Pier 2
R-150



replace crossframes

East Beam Limits of Heat Straightening:
10' from face of Pier 1 (South Pier) to 28'
from face of Pier 1 (South Pier)

EOL

EOS

EOS

EOL

33WF 118

33WF 141

Intermediate Crossframes 3 1/2 x 3 x 3/16 - 8 Spaces @ 12'-11 1/2" = 103'-8"

SUPERSTRUCTURE STEEL FRAMING PLAN

See sheet for Bolted Field Splice Details.

WC1 Repair: Punch through & 4" crack
Picture 385

Correct Location of repairs

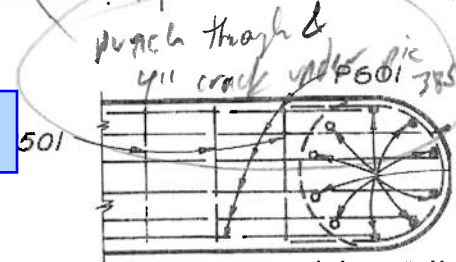
Location depicted incorrectly.

DEFLECTION AND CAMBER

Location	Outside Beams		Inside Beams	
	End Span	Middle Span	End Span	Middle Span
Deflection due to weight of steel	1/32"	3/32"	1/32"	3/32"
Deflection due to remaining dead load	13/64"	18/32"	11/64"	13/32"
Convexity required for vertical curve	23/64"	23/32"	23/64"	23/32"
Sum of Deflection and Convexity	19/32"	1 3/8"	9/16"	1 7/32"
Required Camber	0	1 3/8"	0	1 3/8"

3'-0"

P100.4



Lap the downward leg of the P601 bar to those "C" bar shown thus: •

SECTION H-H